

SB-1404-GIA3

iSCSI-SATA II RAID Subsystem



Unparalleled Performance

- ◆ Front-end 2 x 1Gb full iSCSI offload
- ◆ High data bandwidth of system architecture by powerful 64-bit RAID processor

Unsurpassed Data Availability

- ◆ RAID 6 capability provides the highest level of data protection

Exceptional Manageability Menu-driven front panel display

- ◆ Management GUI via serial console, SSH telnet and Web
- ◆ Event notification via Email and SNMP trap
- ◆ Menu-driven front panel display to monitor environmental devices

Features

- ▶ Front-end 2 x 1Gb full iSCSI offload
- ▶ Supports iSCSI jumbo frame
- ▶ Supports RAID levels 0, 1, 0+1, 3, 5, 6, 10 and JBOD
- ▶ Global hot spare disks
- ▶ Write-through or write-back cache policy for different application usage
- ▶ Supports greater than 2TB per volume set (64-bit LBA support)
- ▶ RAID level migration
- ▶ Online volume expansion
- ▶ Configurable RAID stripe size
- ▶ Instant RAID volume availability and background initialization
- ▶ Supports S.M.A.R.T, NCQ and OOB Staggered Spin-up capable drives
- ▶ Volume rebuilding priority adjustment
- ▶ Auto volume rebuilding
- ▶ Array roaming
- ▶ Support Replication (Windows)



Proware Technology Corp.

Tel: 886-2-2914-8001 (Rep.) Fax: 886-2-2914-7975
http://www.proware.com.tw E-mail: info@proware.com.tw



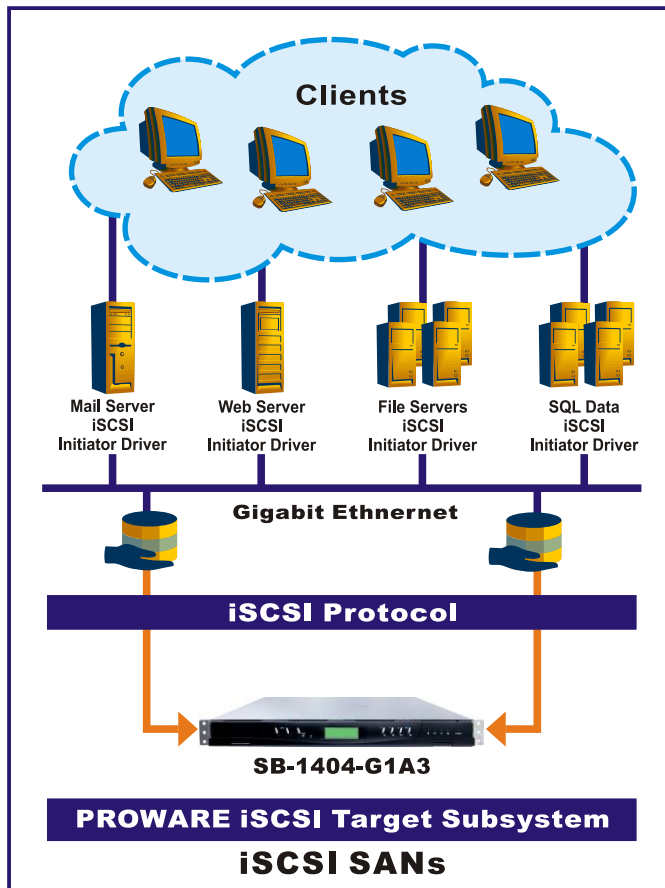
Series Technical Specifications



SB-1404-G1A3

Form Factor : 1U 19-inch rackmount chassis	Supports over 2TB per volume
RAID processor : Intel XScale IOP331 500MHz	Online consistency check
RAID Level : 0, 1, 0+1, 3, 5, 6, 10 and JBOD	Bad block auto-remapping
Cache memory : 512MB ~ 1GB DDR333 DIMM supported	S.M.A.R.T. support
No. of channels (host+drive) : 2 + 4	New disk insertion / removal detection
Host bus interface : 1Gb/s Ethernet	Auto volume rebuild
Drive bus interface : 3Gb/s SATA II	Array roaming
Hot-swap drive trays : Four (4) 1-inch trays	Audible alarm
Host access control : Read-Write & Read-Only	Password protection
Supports CHAP authentication	UPS connection
Jumbo frame support	Power supplies : 220W power supplies w/PFC
Maximum logical volume : up to 255	Cooling fans : 1
Maximum host connection : up to 32	Power requirements : AC 90V ~ 264V full range
Maximum host clustering : up to 8 for one logical volume	6A ~ 3A, 50Hz ~ 60Hz
Global hot spare disks	Environmental
Online Volume migration	Relative Humidity : 10% ~ 85% Non-condensing
Online Volume sets expansion	Operating Temp : 10°C ~ 40°C (50°F ~ 104°F)
Configurable stripe size	Physical Dimension : 44.4(H) x 486.4(W) x 569(D)mm
Instant RAID volume availability and background initialization support	Weight : 7.6Kg (without Disk Drives)

Specification are subject to change without notice.
All company and product names are trademarks of their respective owners.



Advantages of iSCSI

- ▶ Familiar network technology and management
 - Reduces training and staff costs.
- ▶ Proven transport infrastructure
 - Increases reliability.
- ▶ Transition from 1Gigabit Ethernet to 10 Gigabit Ethernet and Beyond
 - Protects investment with simplified performance upgrades Scalability over long distances.
 - Enables remote data replication and disaster recovery.
- ▶ Brings Ethernet economics to storage
 - Enables lower total cost of ownership(TCO).
- ▶ **Consolidation** : iSCSI delivers seamless expandability, automatic load balancing, automatic storage provision, disaster recovery etc..
- ▶ **Virtualization** :
 - Scalable, highly available pool of storage.
 - Storage allocation and resizing on-demand.
 - Centralized management with remote access.
 - Security that protects logical volumes from unauthorized access.
 - Snapshot and replication.
 - Volume mirroring.
 - Multi-Path host access.